

# Inclusion Newsletter

July 2022



Dear all,

Welcome to our last newsletter for this academic year.

Thank you for the warm welcome I have had from everyone, the time has flown past since May when I joined and I have met so many wonderful people who have made me feel so welcome. I know you will all be rushed off your feet with end of year activities and preparations for transitions, while counting down the days to a well-deserved 6 week break.

It was so lovely to see so many SENCO's at the extra face to face SENCO Network and I know I appreciated the opportunity to start putting faces to names and build relationships.

It's an exciting time, as we launch the Digital EHCP in Hambleton and Richmondshire, in preparation for a wider county launch on 19th September.

I would like to take the opportunity to thank you all for your continued hard work and support for all the children with additional needs across North Yorkshire.

I hope you all have an amazing summer holidays and come back bright eyed and bushy tailed ready for another busy school year.

Lisa Abel

## Early Years SENCO Networks

- 12<sup>th</sup> October 2022 – 9:30-11:30am
- 12<sup>th</sup> October 2022 – 6:30-8:30pm
- 8<sup>th</sup> February 2023 – 9:30-11:30am
- 8<sup>th</sup> February 2023 – 6:30-8:30pm
- 17<sup>th</sup> May 2023 – 9:30-11:30am
- 17<sup>th</sup> May 2023 – 6:30-8:30pm

**On Teams, please book via NYES**

## Statutory assessment update



### Digital EHCPs

We are delighted to have launched the Digital EHCP platform in Hambleton and Richmondshire in June. I'm delighted that the launch has been so positive, and I would like to thank all of the SENCOs involved for making this a success.

Initial feedback from the training and drop-in sessions has been positive, and we will be continuing to gather this feedback to inform the full launch in September. We will have a 'go-live' date of 19<sup>th</sup> September following which all EHC Planning will be completed on the Digital Platform. Training will be offered during the second week of term and we'll offer drop-in sessions again, to provide support for specific questions. We also have an e-Module under development which will be ready for September, and additional guidance notes can be provided if required. You may wish to have a look at the Webinar that was delivered for the Hambleton and Richmondshire SENCOs in the meantime. This is available here <https://youtu.be/aXIXbKwHq3s>

### Statutory Assessment

There has been steady progress with Statutory Assessment performance this term, with an average of 40% of new EHC Plans being issued on time since January. We will continue to focus on improvement in this area. As we are now approaching the summer period when schools and many settings will be closed, and some professionals unavailable to provide advice for new requests, it would be useful to consider sending new requests in September to ensure that the advice required to inform the plan can be obtained. Please speak to your Casework Manager if you have any queries about this.

Outstanding Annual Reviews have reduced across the county, and I would like to thank schools for helping us to address this to make sure that these are being held within statutory timescales. However, there is still some way to go before we are where we need to be, with all Annual Reviews being completed within statutory timescales. Please make sure that you prioritise this from the start of term to ensure that all of our children and young people have outcomes which meet their needs, and the right provisions in place to support the achievement of these outcomes.

Wishing everyone has a lovely and very well-deserved summer when it arrives!

Anna Gray

*Don't forget to leave a reminder in your diaries for annual reviews!*

### Would you like to contribute to this newsletter??

We would love to hear all about your SEND good practice, success stories or anything you have found that you would like to share with others.

We can share them in future editions of this newsletter to celebrate all the amazing work here in North Yorkshire.

If you have a story to share please send it to: [wendy.butterfield@northyorks.gov.uk](mailto:wendy.butterfield@northyorks.gov.uk)



## Summer events



### Hearing and Vision Teams



#### Family Days

Building on the success of the three family days that took place last summer for D/deaf children around the county, these events are taking place again. Deaf children often are the only one in their school or nursery who wear hearing aids or use cochlear implants or communicate using sign. Having an opportunity to make friends with other D/deaf children has a positive impact on their mental health and wellbeing. Additionally, for parents having the opportunity to talk with other parents about their shared experience is incredibly valuable too. The events are taking place at:

- Playdale Farm, Cayton, near Scarborough 26<sup>th</sup> July 2022
- Monk Park Farm, Bagby, near Thirsk 2<sup>nd</sup> August 2022
- Newby Hall, near Ripon 9<sup>th</sup> August 2022

These events have been organised by the HI Specialist Practitioners

#### Mobility at Home

Part of the support the Vision team offer to visually impaired children and young people alongside education is supporting their mobility and independence. For school-aged children mobility sessions are in and around the school setting. This summer the Vision Team are offering families the opportunity for mobility training in and around their home and social spaces. They are also supporting them to learn how to travel to their new schools. We hope this additional input will help children and young people to achieve further independence. These sessions are organised by the VI Specialist Practitioners.

### TMP update

We've come to the end of the first full year of targeted mainstream provisions (TMP). As we visit them all before the end of term we are hearing many success stories about the fantastic progress being made by the pupils. Well done to everyone involved!

We currently have 7 of the planned 31 provisions open, with 3 more in development for the Autumn term. We are also in discussions with 13 schools about possible provisions for next year, but need many more to cover all the different areas.

If you would like further information about a TMP please contact [wendy.butterfield@northyorks.gov.uk](mailto:wendy.butterfield@northyorks.gov.uk)

## Cognition and Learning Training: Key dates for Autumn Term Available on NYES to book

Date	Time	Course
27 <sup>th</sup> Sept 2022	9:30am-3:30pm	An Introduction to the role of the Early Years SENCo
4 <sup>th</sup> Oct 2022	9:30am-3:30pm	EY Accredited course- Module 1:The role of the SENCo DAY 1
4 <sup>th</sup> Oct 2022	9:30am-10:30am	Clicker8-getting the most out of it!
12 <sup>th</sup> Oct 2022	9:30-11:30am	EY SENCo net – morning session
12 <sup>th</sup> Oct 2022	6:30pm-8:30pm	EY SENCo net – evening session
18 <sup>th</sup> Oct 2022	9:30am-3:30pm	EY Accredited course- Module 1:The role of the SENCo DAY 2
18 <sup>th</sup> Oct 2022	1pm-4pm	Unlocking Dyslexia-Supporting Dyslexic Pupils in the Classroom
3 <sup>rd</sup> Nov 2022	9:30am-12noon	Neurodiversity - Building a pupil profile DAY 1
10 <sup>th</sup> Nov 2022	9:30am-12noon	Neurodiversity - Building a pupil profile DAY 2
22 <sup>nd</sup> Nov 2022	9:30am-11am	Unlocking a bespoke curriculum for children working at pre-key stages

## HARROGATE, RIPON, KNARESBOROUGH and CRAVEN HUB

Wednesdays 3.30pm – 4.30pm for Schools and Settings



Date:	Lead	2 <sup>nd</sup> attendee
21 <sup>st</sup> Sept 2022	Gill P Jenkins (SEN)	Hannah Knowles (SLCN)
5 <sup>th</sup> Oct	Julia Dickason (C&I)	Tracy Ashton (C&I)
19 <sup>th</sup> Oct	Sam Gray (C&I)	Judith Farrar (C&I)
2 <sup>nd</sup> Nov	Elisabeth Graham-Bell (C&L)	Lorayne Farrington (C&L)
16 <sup>th</sup> Nov	Mary White (C&L)	Judith Farrar (C&I)
30 <sup>th</sup> Nov	Hannah Knowles (SLCN)	Beth Hardy (SLCN)
7 <sup>th</sup> Dec	Gill P Jenkins (SEN)	Jo Deaton (C&I)
11 <sup>th</sup> Jan 2023	Jo Deaton (C&I)	Tracy Ashton (C&I)
25 <sup>th</sup> Jan	Gill P Jenkins (SEN)	Beth Hardy (SLCN)
8 <sup>th</sup> Feb	Elisabeth Graham-Bell (C&L)	Jo Deaton (C&I)
22 <sup>nd</sup> Feb	Julia Dickason (C&I)	Judith Farrar (C&I)
8 <sup>th</sup> Mar	Tracy Ashton (C&I)	Lorayne Farrington (C&L)
22 <sup>nd</sup> Mar	Gill P Jenkins (SEN)	Beth Hardy (SLCN)
29 <sup>th</sup> Mar	Hannah Knowles (SLCN)	Jo Deaton (C&I)
19 <sup>th</sup> Apr	Sam Gray (C&I)	Carol Moxon (C&I)
3 <sup>rd</sup> May	Elisabeth Graham-Bell (C&L)	Hannah Knowles (SLCN)
17 <sup>th</sup> May	Mary White (C&L)	Carol Moxon (C&I)
7 <sup>th</sup> Jun	Hannah Knowles (SLCN)	Lorayne Farrington (C&L)
21 <sup>st</sup> Jun	Julia Dickason (C&I)	Tracy Ashton (C&I)
5 <sup>th</sup> Jul	Gill P Jenkins (SLCN)	Elisabeth Graham-Bell (C&L)
19 <sup>th</sup> Jul	Sam Gray (C&I)	Tracy Ashton (C&I)

To book a virtual slot at the drop in session please contact the SEND Hub on the following email  
[SENDhubHRKC@northyorks.gov.uk](mailto:SENDhubHRKC@northyorks.gov.uk)

Please ensure that your email is sent at the latest by Friday the week before your chosen date with a short summary of your query.

If slots are available, you will be sent a 10-minute appointment within the 3.30-4.30pm time slot from the lead as detailed above.



Hello, my name is Tom Scaramuzza and I am your new SEND Casework Manager

As the end of academic year is very much in sight, I thought I would take this opportunity say Hello to one and all in anticipation of September.

I am thrilled to be working for North Yorkshire Council, being able to contribute towards its growth, with a strong interest in keeping the children, young people and families at the heart of everything we do.

It is not only just an exciting time for myself but for the service as a whole, as we strive to reshape our improvement priorities. Having previously worked in management positions within FE and the private sector, as well as recently completing two years as a SEND Casework Officer for Bradford, I feel that I am in an excellent position to support you as we build on our existing relationships and work together to ensure the best provision for our families, children and young people.

I am very much looking forward to meeting as many of you as I can in the Autumn term to establish effective communication links and to identify key areas where you feel we can collaborate to improve our service.

Have a wonderful summer.

Best wishes

Tom Scaramuzza



# SUCCESS STORIES



The Hearing Team are incredibly proud of Natasha Ghouri who is one of the first Deaf models for ASOS she is also starring in Love Island.



Scarborough kick boxer, 10 year old Limerick Goodwin who has a bilateral hearing loss, achieved a hat trick of titles at the World Kickboxing Organisation, European Championships. She gained three European titles in May and has qualified to represent England at the Unified World Championships in Italy in October. Well Done Limerick

## Providing Preventative Places and Statutory 6<sup>th</sup> Day Provision in the Event of Permanent Exclusion in the Primary Phase



We have been considering ways to ensure appropriate early identification of SEND and support for primary aged children in receipt of multiple exclusions and or may be at risk of permanent exclusion.

Since September 2020, a decentralised Intensive Support Team has been operating in three localities, with a PRS-led IST provision operating in the Scarborough, Whitby and Ryedale locality. This model has been successful in reducing suspensions and exclusions so we are strengthening and extending it as follows:

- In Scarborough, we will commission an 8-place Primary Intensive Support Base to provide a combination of short, focused preventative work and spaces for permanently excluded pupils. We will also recruit one additional SEMH Support Practitioner based in the SEND Hub who can work with schools, providing short, focused preventative outreach sessions
- For the rest of the county, we will increase the capacity of the SEMH Intensive Support Team (IST) to provide short, focused outreach sessions. We will also work with schools to create a base in each locality to support permanently excluded pupils. We will provide a £10,000 retainer for schools to keep (regardless of whether or not they take on an excluded pupil in that academic year) and access to specialist staff to support the pupil and the wider school. In return, schools will provide a roll for the excluded pupil and support for them to access the curriculum for their age and phase

We wish to gather views on our proposed model from school leaders, education providers and others engaged in the education and support of children and young people experiencing distressed behaviour that may lead to suspensions and exclusions. Until the 22<sup>nd</sup> July, an online survey will be available to all stakeholders via this link:

<https://consult.northyorks.gov.uk/snapwebhost/s.asp?k=165158032122>

Contact: [gavin.hayman@northyorks.gov.uk](mailto:gavin.hayman@northyorks.gov.uk)

### Consultations

Don't forget that the DfE have several consultations currently open. We would encourage as many people as possible to respond to the consultations. Please find links below:

SEND and AP Green Paper (closes 22 July) - [SEND Review: Right support, right place, right time - Introduction - Department for Education - Citizen Space](#)

Local area SEND inspection (closes 11 Sept) – [Formal consultation: a new approach to area SEND inspections \(smartsurvey.co.uk\)](#)

# Preparing for Adulthood in North Yorkshire: **transition between children's and adult health services**

## Planning for the future

**As your child gets older, they may be able to start making their own decisions about a lot of things that matter most to them, this includes their health and wellbeing.**

Children's and adult health services are organised differently. If your young person has lots of health needs, there may be many changes to how they receive their health care and support as an adult.

Health teams such as those in your local doctor surgery or hospitals can help them become more independent in managing their own health and moving from children's health services to adult ones. In healthcare we sometimes call this 'transition'. Transition can be individualised to meet their needs by clinicians and professional involved.

It is important to start thinking about the transition for your child as they move from childhood to adulthood and the services they access. This can be done from the age of 14-18.

You should involve your young person's GP in planning the transition to adult health services, because they will become more closely involved when your young person turns 18.

For more information use this link:

[Transitions - NHS North Yorkshire CCG](#) or this QR code





# Selby Locality Board update



Project Overview	Project Details
<p><b>Thrive Approach</b> Thrive provides you with the tools, skills and insights needed to help children and young people become more emotionally resilient and better placed to engage with learning and life.</p>	<p>2 strands: New to Thrive – Primary and secondary schools and EY settings new to Thrive Approach – fully funded training and settings/schools have to fund subscription. Embed Thrive – 9 schools that already have Thrive. LB will fund one additional practitioner being trained. Offered to: EY/ PS/Sec S</p>
<p><b>Unlocking Social, Emotional and Mental Health (SEMH) Training</b> Includes identifying and managing social, emotional and mental health in children and young people.</p>	<p>Fully funded training until July 2023 virtual pre-recorded course that can be accessed at a convenient time. Offered to: EY/PS/Sec S/Post 16/Parents</p>
<p><b>Mental Health First Aid (MHFA) Training</b> Covers age range 8-18 years old and is an accredited course.</p>	<p>32 fully funded training places for a member of school staff team Offered to : PS /Sec S</p>
<p><b>Play and Art Therapy</b> Highly focussed play or art based therapeutic interventions delivered over an 11-week period for highly vulnerable pupils. And/or Group based play or art based therapeutic interventions delivered over an 11-week period for CYP with SEMH.</p>	<p>4 schools will benefit from this fully funded offer of a play or art therapist (depending on age) Offered to: PS/Sec S</p>
<p><b>SNAP</b> Easy to use digital tool to identify SpLD and SEMH need, suggest interventions and monitor progress.</p>	<p>Fully funded one year subscription to all schools (designed for school age children) Offered to: PS / Sec S</p>
<p><b>EY Talk Boost</b> Targeted interventions for children with delayed language, helping to boost their language skills to narrow the gap between them and their peers.</p>	<p>Fully funded training session (1 day, includes £100 to setting to cover supply) and resource pack. Offered to: PS / Sec S</p>

**Want more information?** Come along to Selby's **Virtual Drop-in Session on 14<sup>th</sup> July at 4pm** to find out more about these projects (see QR code and link below) or for details on **Inclusion Projects** email [jennie.holt@northyorks.gov.uk](mailto:jennie.holt@northyorks.gov.uk)

QR code	Teams link
	<p><a href="https://teams.microsoft.com/l/meetup-join/19%3ameeting_YzM5MGQ3MmUtY2RkNy00YzljLThlMTYtMjBhYzEzYzI0OTg2%40thread.v2/0?context=%7b%22Tid%22%3a%22ad3d9c73-9830-44a1-b487-e1055441c70e%22%2c%22Oid%22%3a%221e8707e7-c6df-4348-9712-9d1ba34756ff%22%7d">https://teams.microsoft.com/l/meetup-join/19%3ameeting_YzM5MGQ3MmUtY2RkNy00YzljLThlMTYtMjBhYzEzYzI0OTg2%40thread.v2/0?context=%7b%22Tid%22%3a%22ad3d9c73-9830-44a1-b487-e1055441c70e%22%2c%22Oid%22%3a%221e8707e7-c6df-4348-9712-9d1ba34756ff%22%7d</a></p>





## Hambleton and Richmondshire Locality Board Projects – awaiting procurement approval

Project Overview	Project Details
<p><b>Autism Spectrum Condition (ASC) Project (2 year project)</b> Includes surveying providers to identify their support needs, training staff and parents.</p>	<p>In-depth project to focus on supporting pupils with ASC across all ages and including Special Schools. This first year will include surveying schools and settings and offering Unlocking Autism training. Offered to: Parents and All Providers</p>
<p><b>Makaton</b> Makaton uses symbols, signs and speech to enable people to communicate</p>	<p>Providers across all age groups would be offered training (either 2 hr Taster OR 1-day Level 1). Those on Level one would be offered subscription to symbol production. Offered to: EY settings, Schools and Post-16</p>
<p><b>SNAP</b> Easy to use digital tool to identify SpLD and SEMH need, suggest interventions and monitor progress.</p>	<p>Fully funded one year subscription to all schools (designed for school age children) Offered to: Primary and Secondary Schools</p>
<p><b>Talk Boost</b> Targeted interventions for children with delayed language, helping to boost their language skills to narrow the gap between them and their peers.</p>	<p>Fully funded 1-day training sessions for Early Years setting staff and Primary School staff. (Early Years are also offered resource packs and funding to cover supply costs for the training day). Offered to: Early Years settings</p>
<p><b>Clicker 8 and Docs Plus Pilot</b> Supporting pupils with literacy</p>	<p>10 schools will benefit from Clicker 8 and 6 will benefit from Docs Plus. Offered to: Schools including Special Schools</p>
<p><b>De-escalation Training</b></p>	<p>Bespoke training session focussing on Positive Behaviour Approaches, De-escalation Techniques and Safe Holding Principles. Twilight training. Offered to: Early Years settings and schools</p>
<p><b>Transition Project</b></p>	<p>Sunbeck would offer a supportive weekly activity for young people vulnerable at transition. Offered to: Secondary Schools</p>

**Want more information?** You will receive emails once these projects go live from [jennie.holt@northyorks.gov.uk](mailto:jennie.holt@northyorks.gov.uk) however if you want information before then please email Jennie.



## FURTHER EDUCATION NETWORKS

*Further Education networks enabling practitioners to support SEND young adults as they transition and learn in Post 16 settings.*

These network meetings are intended for SENCO's (Secondary and Post 16) Inclusion Managers, Post 16 leaders, Careers Leads, Careers advisors, Post 16 providers including Supported Internships, Personalised Learning College, Traineeships and Alternative Provision.

Each term the latest news and issues related to special educational needs will be discussed. This will include the latest data available in your locality. There will be opportunity for delegates to talk together and share good practice and issues, which they have encountered.

As a result of attending the FE Networks regularly, delegates should: Fully understand how to make best provision for young adults with SEND in line with the latest legislation. Have access to relevant resources and a wider network of Local Authority and peer practitioners support across the Local area.

Book Via NYES [Training & Events | NYES Training](#)

For further information please contact [Katie.Middleton@northyorks.gov.uk](mailto:Katie.Middleton@northyorks.gov.uk)

## Preparing for Adulthood Webinars

- Online webinar aimed to support SENCOs in school with planning, delivering and monitoring PfA outcomes for all children with SEND
  - Wednesday 14th September 2022 15:30 – 17:00 Primary School SENCO's
  - Thursday 15th September 2022 15:30 – 17:00 Secondary School SENCO's

The course will cover:

- What is PfA and the statutory requirements
- PfA across the curriculum
- SMART PfA targets and outcomes
- Evidencing PFA in SEND paperwork.

Book online with NYES [Training & Events | NYES Training](#)



## NYCC SNAP Training

**Book now to attend the online training in September!**

SNAP offers **targeted interventions** involving both home and school, offering an entirely rounded approach to fully support the specific needs of every child.

### Dates:

- Wednesday 7th September 2.00pm – 3.00pm
- Monday 12<sup>th</sup> September 3.30pm – 4.30 pm
- Wednesday 14<sup>th</sup> September 12.30pm – 1.30pm
- Friday 23<sup>rd</sup> September 12.00pm – 1.00pm



To book on, please contact [Joanna.Lings@northyorks.gov.uk](mailto:Joanna.Lings@northyorks.gov.uk) and provide the following information:

- Name and email of account manager
- School name
- Date you would like to attend

Please copy and paste the sentence below to email when booking on for training if you consent to details being passed onto Hodder Education so that we can create you an account for SNAP:

**\*I consent to my details being passed onto Hodder Education.\***

## Scarborough, Whitby & Ryedale Locality Board Projects 2022/23



1. SNAP screening tools coming soon! Please sign up now. Email [Joanna.Lings@northyorks.gov.uk](mailto:Joanna.Lings@northyorks.gov.uk)
2. Early Excellence training package for all PVI's and Childminders coming soon.
3. Sandcastles Play Therapy, Sidewalk Youth Project and Staff CPD packages available in Autumn term.
4. Place2Be School project in Whitby starting January 2023.
5. 12 More schools to become Nurture schools , if interested please contact [Gavin.Hayman@northyorks.gov.uk](mailto:Gavin.Hayman@northyorks.gov.uk)
6. Post 16 transition project and moving on event.
7. Year 6 – 7 transition project available now! £500 towards the cost of additional transitions for SEND pupils.

For further information on all projects and to claim your transition funding please email [Katie.Middleton@northyorks.sch.uk](mailto:Katie.Middleton@northyorks.sch.uk)

## Craven Locality Board Projects 2022/23



1. SNAP screening tools coming soon!. Please sign up now. Email [Joanna.Lings@northyorks.gov.uk](mailto:Joanna.Lings@northyorks.gov.uk)
2. Early Excellence training package for all PVI's and Childminders coming soon.
3. Youth Mental Health First Aider Training coming Autumn 2022.
4. Post 16 Moving on Event in Spring 2023.
5. Year 6 to 7 transition funding for SEND pupils. £500 per school now available to claim!

To claim your transition funding or discuss any of the projects please contact [Katie.Middleton@northyorks.sch.uk](mailto:Katie.Middleton@northyorks.sch.uk)

## Harrogate, Knaresborough & Ripon Locality Board Projects 2022/23

1. HKR Engagement Event at Ripley Castle Friday 23<sup>rd</sup> September 2022 2pm – 4pm (please note rearranged date from 7<sup>th</sup> July 2022)
2. Coming soon! 3-year Subscription for Clicker 8 or DocsPlus from Crick Software.
3. Free access to NYCC Inclusion training for the Private/AP/Independent sector worth £500 per setting – launching September 2022
4. Year 6 – 7 transition funding now available for SEND pupils. Claim up to £500 per setting.
5. Post 16 project developing enhanced extra-curricular activities for young people with SEND.

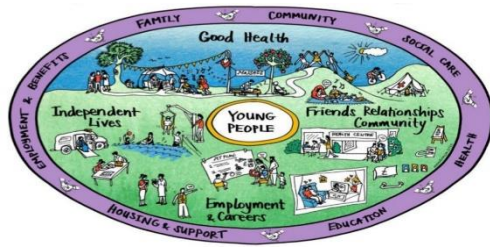
To claim your transition funding or learn more about any of the projects please email [Katie.Middleton@northyorks.gov.uk](mailto:Katie.Middleton@northyorks.gov.uk)



## Preparation for Adulthood

We use the term “Preparation for Adulthood” or PfA to ensure that young people with special educational needs and disabilities have the best chance to succeed in:

- Education / Paid Employment
- Health
- Independent Living
- Community Inclusion and Relationships



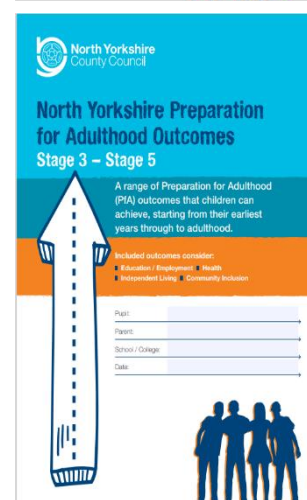
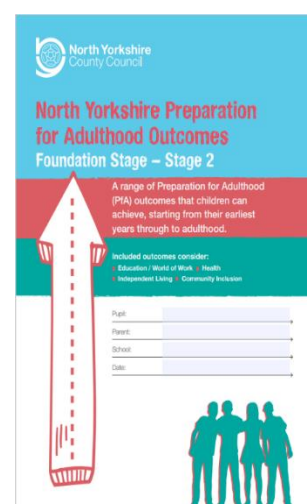
It is important that we start to think about the goals and aspirations of our young people as soon as possible, starting from their earliest years. This is statutory in the Code of Practice from year 9 onwards however, we are working with schools to start much sooner. With the help of professionals, parent, carers and young people themselves, we can plan for successful transitions into adulthood and beyond. This requires a close working relationship between education, children’s and adult social care, health, third sector and private institutions, charities and employers.

To oversee all of the on-going developments, we have setup the Preparation for Adulthood Forum that meets every 6 weeks and has working groups attached in Employment, Education, Leisure, Health, Transitions and Independent Living. The group was established to ensure that all key stakeholders in the Local Area could support the development and implementation of actions to improve the outcomes of children and young people with SEND. The membership reflects the breadth of key areas across health, employment, community and adult services, which are underpinned by educational provision from the earliest years and the voices of young people and their families.

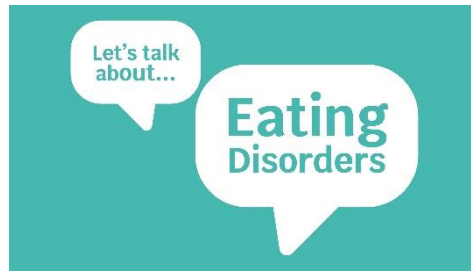
Something that we’ll be able to share with you in September via the SENCo Network / SEND Local Offer, is our PfA Outcomes booklets starting from foundation through to adulthood...

The booklets are based on Dept. for Education PfA framework and designed to support SEND children and young people, across the four main areas. It provides opportunities to record aspirations and lists outcomes by stage, not age. The booklets will be used to track PfA outcomes and evidence for SEND users as well as encourage conversations in Annual reviews around their next steps.

There will also be another round of PfA Webinars for Primary / Secondary schools to attend in the new academic year. These will be advertised in the Red Bag and through SENCo networks.



## Workforce development



North Yorkshire secondary schools (maintained, academies and independent) and PRUs are being offered the opportunity to access **FREE** training to increase awareness and understanding of eating disorders.

The training has been funded through the Wellbeing Return Grant due to data which is indicating an increase in eating disorders in young people. The training is provided through BEAT a nationally recognised charity that provides a wealth of support and information in relation to eating disorders.

The training and other supporting information is all accessible via an online portal and there is a range of training available for different staff members in a school. There is **no limit** to the number of staff who can access the training. Schools can sign up for the training from the 1st March 2022 with access for North Yorkshire schools going live for a full year from April 2022. A year's access will enable schools to plan the training requirements in for staff and to be able to access further support that is available via the online portal.

Schools Professionals Online Training from BEAT SPOT encompasses a range of bite sized interactive learning webinar videos delivered by our expert eating disorder clinicians, E-learning modules and weekly Q&A sessions with an eating disorder clinician and Lived Experienced Ambassador. The platform also enables school professionals to post questions on a community forum to share advice with their peers. While eating disorders can affect anyone of any age, school-age children are a particularly vulnerable group, and potential factors in an eating disorder's development, such as trouble with peers and academic pressure, can appear in the school environment.

School staff are ideally placed to spot the early signs of an eating disorder. School professionals will be taught how to spot the early signs of an eating disorder, talk to a pupil exhibiting them, engage their families, and support them to seek medical assessment.

The downloadable resources available will enable school professionals to cascade learning to students through our tools and ideas on awareness raising events, 3 lesson plans centered around students learning more about mental health including eating disorders, as well as body image and self-esteem. You will also have access to school policies to help ensure that your school has an approach to eating disorders within school, offering guidance for all staff. SPOT is designed to enable secondary school professionals to help pupils into treatment quickly.

**Register for free at [elearn.beateatingdisorders.org.uk](https://elearn.beateatingdisorders.org.uk), or for any further questions please contact the training team at [training@beateatingdisorders.org.uk](mailto:training@beateatingdisorders.org.uk) or 01925 912829.**

It's been an incredibly busy year for many services this year and SENDIASS North Yorkshire is no exception. Looking over the number of referrals that came into our Advice Line ten years ago amounted to 515 and felt very busy for the 4.5 members of staff as we were full time equivalent. On the 31<sup>st</sup> March this year we had 2632 new referrals from 2021/22 with an increase of 34% in one year with the same staff number.

We have changed some of the ways we work, now offering monthly webinars to parents and carers to give information and support on requesting Education, Health and Care plans (the EHCAR). We are also offering this at times to professionals too when requested such as Carer support groups and the Early Help service. We are part of the Summer training sessions for Early Help too to focus on our role and SEN support in particular.

This summer for the first time we will be closing our advice line in the first week of August. This is to concentrate on updating our website, changing some of its layout and design with the focus on it being more accessible, especially to young people.

At the beginning of June some of the team met Flying High young people's group. SENDIASS want to form a young people's group to focus on some of our duties within this service and have discussions that would inform our offer to them. The Flying High group asked if they could help start this group with us and so we begin in September. We are going to meet virtually every half term, Wednesday 4pm and already have some other young people aged between 13 and 19 years old joining us. Anyone from 11-25 years with SEND can join either of these groups though and the welcome given is exceptional. We were bowled over by the warmth we received by the Flying High group and it was great to meet such enthusiasm to talk about the SEND review Green Paper. We are still trying to decide on a name for the SENDIASS group with some young people. Suggestions such as Flying High with SENDIASS, SENDIASS Flying High and ideas such as Groupy Mc Groupface so far have been put to one side. I suggested FlyIAS HighIAS but that was flatly refused, although I have no idea why!

Sending everyone our best wishes for this summer and hope you all enjoy some holiday time.

SENDIASS North Yorkshire.

Welcome to Parent Carer Voice North Yorkshire.

We are the recognised parent carer forum for the region. Our vision is to inform, empower and represent the collective voice of families with children and young people with SEND across North Yorkshire.

If you are a parent / carer of a child 0-25 years with additional needs (SEND) and live in North Yorkshire, you can become a member and make use of all our services including regular newsletters, offers and information about events and training in your local area. Membership is free; we just ask for a little information about you and your family's needs.

To become a member please visit <https://www.parentcarer voiceuk.org/joinus>



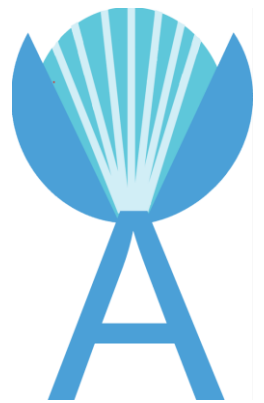
## A Guide to the Autism Community Connector and Engagement Team

### INFORMATION FOR PARENTS AND PARTNERS

#### What is the Autism Community Connector and Engagement Team?

The Autism Community Connector and Engagement Team in North Yorkshire and York aims to improve the health; well-being and independence of families with children and young people who are awaiting or have recently received an Autistic diagnosis to strengthen pathways of support. The core principles of the service are:

- To provide free, time limited, targeted, support
- To promote independence and facilitate self-help
- To work alongside families to build their confidence and skills
- To facilitate self-assessments and make referrals where appropriate.
- To complement existing services
- To provide practical advice, information and support



**Social Prescribers** spend time with families on a one-to-one basis to identify what is important to them, what potential networks of support they have and what their priorities are. They will work with families to achieve positive outcomes that are important to them. There isn't a definitive list of 'things' that the Social Prescriber will do because it is a personalised service and it will vary as to what the individual wants to achieve. Some examples of support are:

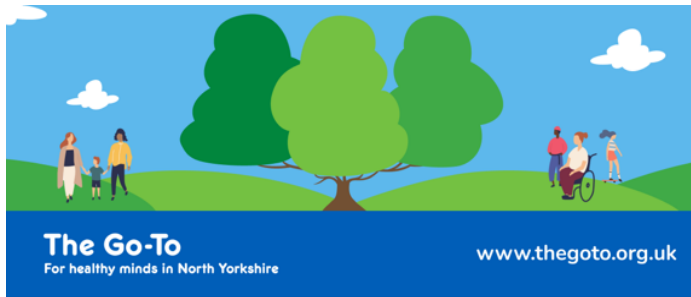
- Support to build self-confidence
- Support with practical advice and skills
- Helping a family to be connected to, linked with or signposted to services and networks in their area.

#### Who can access support from the Autism Community Connector and Engagement Team?

This service is currently available to families who have a child and young people with autism diagnosis or those who are currently going through the diagnostic process. As this service is currently a pilot, it is available only to families based in Harrogate, Hambleton/Richmondshire and City of York localities.

For further details about the project please contact Ruth Little – [ruth.little@northyorks.gov.uk](mailto:ruth.little@northyorks.gov.uk)





**Pool of resources:**

A new pool of free resources have launched to support professionals working with Children, parents and Carers and Young People themselves in finding the right mental health support at the right time.

**Needs based guidance & Marketplace specific:**

Visit the Marketplace and Needs Based Guidance at [www.thegoto.org.uk](http://www.thegoto.org.uk) - "Professional resources" page for information and support.

A graphic with a light orange background and purple accents. At the top, it says "NEW resources to support Children and Young People's Social and Emotional Mental Health". Below this, three overlapping tablet devices are shown. The leftmost tablet displays a document with text and a circular diagram. The middle tablet shows a green circular infographic with various logos and text. The rightmost tablet displays the "Mini Marketplace" logo and text: "Social and Emotional Mental Health Support for Children and Young People in North Yorkshire". At the bottom left, it says "The Go-To For healthy minds in North Yorkshire". At the bottom right, it says "www.thegoto.org.uk" and includes logos for North Yorkshire County Council and NHS. An illustration of a diverse group of people, including a person in a wheelchair, is in the bottom right corner.

# This is me festival

The 'This is Me' Festival took place at the Ripon Rugby Club on the 26th June 2022.

This is the third time this free, fully accessible festival has been organised by Nidderdale Children's Resource Centre, a Short Breaks Children's Home based in Harrogate. The festival is sponsored by Ripon Rugby Club who provide the staging and marquee and numerous local businesses, entertainers, crafts people and charities give their invaluable support .

The 2022 festival was opened by the Mayor of Ripon, Sid Hawke and Dance Matt, a children's entertainer introduced the first act which was the amazing Rock Choir. The day ended with Rory Hoy, a well-known DJ from Knaresborough who has starred in a film and written a number of books about his own journey with autism. Throughout the day bands played and whilst sound checks were being completed, Dance Matt entertained and played games with the festival goers.

The festival has a following from previous years and attractions have returned, such as King and Captain, a local barbers who specialise in supporting people having their hair cut when they struggle with sensory overload. They offer free haircuts at the 'This is Me' and Marco the clown who engages with all with circus skills and giant bubble making.

This year Fairy Enchantica's joined the Festival and brought their own wellbeing camp where everyone could join in Yoga and sensory story telling sessions. In addition to this, the Festival was supported by Hart animals, KL Therapy ponies, Owl Adventures, Avalon, Harrogate model railway group, Ripon Library, Open Country, Remap, Rural Arts and NYCC Social Prescribers.

Nidderdale staffed the day wearing their distinctive 'This is Me' Staff t-shirts, but Social Workers and friends of Nidderdale also gave up their time to help manage the event and ensure it was safe and successful. Rugby Club members also kindly volunteered to keep the bar and facilities open.

The footfall for the day was over 1000 people and feedback has been extremely positive, this has been from Nidderdale parents and over face book and emails.

One Nidderdale parent told us how it is so difficult to find anything that is inclusive and where they can come in and out depending on how their child is feeling at the time.



# FEEDBACK

An amazing day and will definitely be back next year 😊



Great day so nice to see everyone having a good time meeting up with friends & making new ones. Roll on next year!

Hello, I smiled all afternoon!

It was the first time I attended this event. I had no idea what to expect so assumed it would be like a school fête. Oh, my goodness it was so much more than that. It was a full on fabulous festival. Impressive to say the least, and something I have never seen the likes of.

There was obviously a huge amount of careful planning, organising and co-ordinating which meant the event ran beautifully for everyone who attended.

When I mentioned this to you, your response was very humble when you said it was down to the hard work of the team.

The most important observation was that everyone came together and were clearly having a great time.

Staff, entertainers, families and especially all of the young people were communicating, dancing and participating. It seemed that everyone felt valued and safe.

Everyone was smiling ! Wow! It was wonderful! What a fabulous 'This Is Me' festival. I just had the best time and I am still smiling.

Thank you so much for inviting me and please invite me to the next one.

Much fun and happiness

