

Date of meeting:	Thursday, 27 September 2018
Title of report:	Options on Exceptional Element 2 Funding
Type of report: Delete as required	For Discussion/ Information
Executive summary: Including reason for submission	The introduction of the National Funding Formula to notional Element 2 SEN funding allocations, as well as pressures on the High Needs Budget, have led to the need to review the funding allocation, criteria and distribution of Exceptional Element 2 funding.
Budget / Risk implications:	Proposals needs to be financially sustainable and that any distribution targets funding at those schools that need it most to support pupils with SEN
Recommendations:	That members of the Schools Forum note the contents of the report.
Voting requirements:	None
Appendices: To be attached	Appendix 1: Proposed Element 2 Funding to each eligible school under Option 1 and Option 2 Appendix 2: Proposed Criteria For Allocating E2 Funding
Report originator and contact details:	Qingzi Bu, Senior Accountant Qingzi.Bu@northyorks.gov.uk
Presenting officer: If not the originator	Howard Emmett, Assistant Director – Strategic Resources

1.0 PURPOSE OF THE REPORT

- 1.1 The paper provides information on options for Exceptional Element 2 (E2) budget allocations.

2.0 BACKGROUND

- 2.1 The Local Authority has consulted with schools and academies in Summer Term 2018 on proposals to change the way in which Exceptional E2 budget is allocated. This followed changes to the notional E2 SEN funding through the National Funding Formula. The consultation ran from 20th June to 20th July 2018 and proposed a set of new criteria and funding rates for the distribution of the funding, which effectively targeted funding at small and inclusive schools with high levels of SEN.
- 2.2 Unfortunately there was a very low response rate with only four schools returning a formal response. Following discussions at the High Needs Funding Subgroup on 10th September 2018, the Local Authority has adapted the original proposal and proposes to undertake another consultation to give schools a further opportunity for input before making a final decision.

2.0 NOTIONAL ELEMENT 2 (E2) SEN BUDGETS

- 2.1 The notional SEN budget (E2) is a proportion of a school's base funding which is "notionally" set aside for meeting the needs of children and young people with SEN attending their school. This is the same for all schools and academies.
- 2.2 The purpose of the notional SEN budget is not to provide a separate funding stream for schools and academies to meet the needs of pupils with SEN, but to provide clarity that money is incorporated into their base budgets for that purpose.
- 2.3 From their formula funding, schools and academies are expected to provide a core offer of teaching and learning for all pupils, and up to the first £6,000 of the costs of providing additional and different support to pupils with SEN. This should be aligned with the identification of children at SEN support with details of the additional support required specified in an SEN Support Plan in accordance with the SEN Code of Practice.
- 2.4 From April 2014, this £6,000 threshold has been mandatory. Whilst notional E2 funding is not ring-fenced, there is an expectation that schools and academies can account for how they have used this level of funding to meet the support needs of pupils with SEN prior to seeking additional top-up funding for that pupil. Neither should schools and academies regard the notional SEN budget as a fixed budget sum for spending. Good practice

would also include transparency in the use of this money within a school's SEN Information report on their website.

- 2.5 Following the introduction of the National Funding Formula in 2018-19, the calculation of the notional SEN percentage allocation within school and academy delegated budgets increased to 8.68% from 3.89%. In effect, this means that schools are required to provide support for more children with SEN in their establishments before they will be entitled to any additional contingency funding from the LA. It is important that school and academy leaders, governors and SENCOs are aware of notional SEN budget allocations and how resources are being deployed.

3.0 EXCEPTIONAL E2 FUNDING

- 3.1 The Education and Skills Funding Agency (ESFA) requires that local authorities have regard to the provision of additional funding outside the main funding formula for mainstream schools and academies on a consistent and fair basis where the number of their high needs pupils cannot be reflected adequately in their formula funding and where it would be unreasonable to expect them to pay for the costs of the first £6,000 of additional support for all high needs pupils.
- 3.2 Local authorities may also provide additional funding from their high needs block to schools that have a higher proportion of pupils with SEN, for example, for schools that have developed a particular specialism or have a strong local reputation for inclusion that means that they attract higher than average numbers of pupils with Education, Health and Care Plans (EHCPs) or pupils with SEN support needs.
- 3.3 There may also be some instances where it is debateable whether schools have sufficient money in their core budgets to meet the first £6,000 of additional support costs and where economies of scale come into play, for example in very small schools.

4.0 PROPOSALS FOR CHANGE REQUIRING CONSULTATION

- 4.1 Transitional Exceptional E2 funding has already been distributed to schools for the Summer Term 2018-19. Taking into account responses received during the Summer 2018 consultation period as well as feedback from the High Needs Funding Subgroup, it is proposed that the recurring Exceptional E2 budget will total £250k. Most of the budget (£200k) will be allocated as fixed amounts to individual schools at the start of the financial year; the remaining £50k will be retained as a contingency fund for significant in-year EHCP movements for small schools. In addition, the Local Authority proposes to implement one of the following three options.
- 4.2 **Option 1a** - To apply the set of criteria for Exceptional E2 funding as set out in Appendix 2 as the new method of fixed allocation, starting from Autumn Term

2018-19. This option would be a recurring budget within the High Needs Block.

- 4.3 **Option 1b** – Similarly to Option 1a, to apply the set of criteria for Exceptional E2 funding as set out in Appendix 2 as the new method of fixed allocation, starting from Autumn Term 2018-19. However, this option would be to cease funding from 1st April 2019.
- 4.4 **Option 2** - To continue with the transitional funding method used for the Summer Term 2018-19 and cease funding from 1st April 2019
- 4.5 **Option 3** – Allocate no further funding (i.e. effectively cease funding at the end-Summer Term 2018).
- 4.6 Indicative funding allocations at individual school level for the options 1 and 2 are shown in Appendix 1. For option 1, the August 18 to March 19 values will be updated and finalised prior to the start of the consultation with EHCP pupil counts as at 30 September 2018. The 2019-20 (April 19 to March 20) values will be updated and finalised with EHCP and SEN pupil counts gathered in the January 2019 Schools census once the data is available.

5.0 RECOMMENDATIONS

- 5.1 Schools Forum are asked to note the contents of the report and to note the proposal for a consultation with schools and academies on the options outlined in section 4.

Stuart Carlton
Corporate Director – Children & Young People's Service

		OPTION 1			OPTION 2				
		2018/19		2019/20	2018/19		2019/20		
DfE	SCHOOL	Transitional Funding (April to July)	New Methodology - Exceptional E2 (Aug to Mar)	TOTAL 2018/19	New Methodology - Exceptional E2 (Apr to Mar)	Transitional Funding (April to July)	Transitional Funding (Aug to March)	TOTAL 2018/19	Funding Ceases
2000	Thomas Hinderwell Primary Academy	0	0	0	0	0	0	0	0
2001	Brotherton & Byram Community Primary School	1,183	0	1,183	0	1,183	448	1,631	0
2002	Staynor Hall Community Primary Academy	0	0	0	0	0	0	0	0
2003	St Stephen's Catholic Primary School, Skipton	2,342	0	2,342	0	2,342	887	3,228	0
2004	Camblesforth Community Primary School	2,813	0	2,813	0	2,813	1,065	3,878	0
2005	Hawes Community Primary School	0	0	0	0	0	0	0	0
2007	Richmond Church of England Primary School	7	0	7	0	7	3	10	0
2008	Greystone Community Primary School	0	0	0	0	0	0	0	0
2040	Leeming and Londonderry Community Primary School	0	0	0	0	0	0	0	0
2041	Glaisdale Primary School	1,150	10,069	11,219	15,954	1,150	435	1,585	0
2042	Lealholm Primary School	0	0	0	0	0	0	0	0
2043	Goathland Primary School	0	0	0	0	0	0	0	0
2047	Great Smeaton Community Primary School	0	425	425	1,738	0	0	0	0
2060	Oakridge Community Primary School	0	0	0	0	0	0	0	0
2061	Staithe, Seton Community Primary School	0	0	0	0	0	0	0	0
2063	Hunton and Arrathorne Community Primary School	0	0	0	0	0	0	0	0
2064	Kirkbymoorside Community Primary School	0	0	0	0	0	0	0	0
2065	Leyburn Community Primary School	1,556	0	1,556	0	1,556	589	2,145	0
2074	Malton Community Primary School	0	0	0	0	0	0	0	0
2075	Navton Community Primary School	109	0	109	0	109	69	178	0
2076	Newby and Scalby Primary School	1,251	0	1,251	0	1,251	474	1,725	0
2080	Applegarth Primary School	0	0	0	0	0	0	0	0
2081	North and South Cowton Community Primary School	0	0	0	0	0	0	0	0
2083	Osmotherley Primary School	712	1,283	1,995	2,374	712	449	1,161	0
2096	Reeth Community Primary School	1,412	3,191	4,604	5,387	1,412	891	2,304	0
2097	Romanby Primary School	0	0	0	0	0	0	0	0
2098	Rosedale Abbey Community Primary School	0	0	0	0	0	0	0	0
2108	Barrowcliff Primary School	0	0	0	0	0	0	0	0
2112	Scarborough, Braeburn Primary School	0	0	0	0	0	0	0	0
2114	Scarborough, Friarage Community Primary School	0	0	0	0	0	0	0	0
2117	Scarborough, Gladstone Road Primary School	0	0	0	0	0	0	0	0
2120	Scarborough, Northstead Community Primary School	0	0	0	0	0	0	0	0
2132	Slingsby Community Primary School	0	0	0	0	0	0	0	0
2133	Snape Community Primary School	863	2,646	3,509	4,135	863	545	1,408	0
2138	Stillington Primary School	0	0	0	0	0	0	0	0
2139	Stokesley Community Primary School	0	0	0	0	0	0	0	0
2150	Alanbrooke Community Primary School	0	0	0	0	0	0	0	0
2151	Welburn Community Primary School	214	0	214	0	214	135	349	0
2154	Whitby, East Whitby Community Primary School	9,564	0	9,564	0	9,564	3,622	13,186	0
2163	Northallerton, Mill Hill Community Primary School	0	0	0	0	0	0	0	0
2164	Easingwold Community Primary School	1,212	0	1,212	0	1,212	765	1,977	0
2165	Dishforth Airfield Community Primary School	0	0	0	0	0	0	0	0
2166	Leeming RAF Community Primary School	4,292	0	4,292	0	4,292	2,709	7,001	0
2167	Colburn Community Primary School	0	0	0	0	0	0	0	0
2170	Overdale Community Primary School	0	0	0	0	0	0	0	0
2171	Linton-on-Ouse Primary School	402	0	402	0	402	254	657	0
2173	Le Cateau Community Primary School	0	0	0	0	0	0	0	0
2183	Sowerby Community Primary School	4,918	0	4,918	0	4,918	1,862	6,780	0
2186	Sheriff Hutton Primary School	722	0	722	0	722	456	1,178	0
2188	Wavell Community Junior School	638	0	638	0	638	402	1,040	0
2189	Catterick Garrison, Wavell Community Infant School	623	0	623	0	623	393	1,017	0
2190	Airy Hill Community Primary School	0	0	0	0	0	0	0	0
2197	West Cliff Primary School	0	0	0	0	0	0	0	0
2206	Wheatcroft Community Primary School	0	0	0	0	0	0	0	0
2212	Carnagill Community Primary School	0	0	0	0	0	0	0	0
2217	Whitby, Slakesby Community Primary School	111	0	111	0	111	70	180	0
2221	Sinnington Community Primary School	0	0	0	0	0	0	0	0
2222	Pickering Community Junior School	838	0	838	0	838	529	1,367	0
2223	Seamer and Iton Community Primary School	936	0	936	0	936	591	1,526	0
2224	Cayton Community Primary School	0	0	0	0	0	0	0	0
2225	Broomfield School	3,402	0	3,402	0	3,402	2,147	5,549	0
2228	Hutton Rudby Primary School	0	0	0	0	0	0	0	0
2233	Lindhead School	0	0	0	0	0	0	0	0
2235	Pickering Community Infant and Nursery School	0	0	0	0	0	0	0	0
2236	Helmsley Community Primary School	0	0	0	0	0	0	0	0
2237	Thirsk Community Primary School	0	0	0	0	0	0	0	0
2242	Alverton Community School	0	0	0	0	0	0	0	0
2245	Aine Primary School	786	0	786	0	786	496	1,282	0
2246	Amotherby Community Primary School	0	0	0	0	0	0	0	0
2247	Appleton Wiske Community Primary School	624	0	624	0	624	394	1,018	0
2249	Brompton Community School	0	0	0	0	0	0	0	0
2250	Brompton & Sawdon Community Primary School	0	0	0	0	0	0	0	0
2252	Carlton Miniott Community Primary School	0	0	0	0	0	0	0	0
2256	Castleton Community Primary School	0	3,142	3,142	163	0	0	0	0
2257	East Ayton Community Primary School	0	0	0	0	0	0	0	0
2301	Appleton Roebuck Primary School	0	0	0	0	0	0	0	0
2302	Askwith Community Primary School	0	0	0	0	0	0	0	0
2305	High Bentham Community Primary School	3,691	0	3,691	0	3,691	2,329	6,020	0
2309	Boroughbridge Primary School	1,318	0	1,318	0	1,318	832	2,150	0
2310	Bradleys Both Community Primary School	0	0	0	0	0	0	0	0
2312	Burton Salmon Community Primary School	0	0	0	0	0	0	0	0
2314	Carlton-in-Snaith Community Primary School	0	0	0	0	0	0	0	0
2316	Cononley Community Primary School	0	0	0	0	0	0	0	0
2317	Cowling Community Primary School	0	0	0	0	0	0	0	0
2320	Fairburn Community Primary School	0	0	0	0	0	0	0	0
2321	Kettlesing Felliscliffe Community Primary School	539	7,249	7,788	5,956	539	340	880	0
2324	Giggleswick Primary School	32	0	32	0	32	20	53	0
2327	Great Ouseburn Community Primary School	1,421	3,254	4,676	365	1,421	897	2,319	0
2328	Harrogate, Bilton Grange Community Primary School	4,282	0	4,282	0	4,282	1,622	5,904	0
2329	Harrogate, Grove Road Community Primary School	7,362	0	7,362	0	7,362	4,647	12,009	0
2330	Harrogate, New Park Community Primary School	0	0	0	0	0	0	0	0
2331	Outlands Infant School	803	0	803	0	803	304	1,107	0
2332	Starbeck Community Primary School	4,089	0	4,089	0	4,089	2,581	6,669	0

DFE	SCHOOL	OPTION 1				New Methodology - Exceptional E2 (Apr to Mar)	OPTION 2					
		2018/19			TOTAL 2018/19		2018/19			TOTAL 2018/19		
		Transitional Funding (April to July)	New Methodology - Exceptional E2 (Aug to Mar)				Transitional Funding (April to July)	Transitional Funding (Aug to March)				
2333	Western Primary School	3,329	0		3,329	0	3,329	0	0	0	0	
2335	Summerbridge Community Primary School	0	0		0	0	0	0	0	0	0	
2336	Hellfield Community Primary School	635	0		635	0	635	401	1,036	0	0	
2337	Hensall Community Primary School	0	0		0	0	0	0	0	0	0	
2338	Glasshouses Community Primary School	430	0		430	0	430	271	701	0	0	
2343	Kettlewell Primary School	1,614	7,698		9,313	12,397	1,614	1,019	2,633	0	0	
2346	Lothersdale Community Primary School	969	0		969	0	969	367	1,336	0	0	
2347	Darley Community Primary School	0	0		0	0	0	0	0	0	0	
2348	Beckwithshaw Community Primary School	439	0		439	0	439	277	715	0	0	
2350	Scotton Lingerfield Community Primary School	34	0		34	0	34	22	56	0	0	
2351	Selby Community Primary School	0	0		0	0	0	0	0	0	0	
2354	Sicklinghall Community Primary School	186	0		186	0	186	117	303	0	0	
2356	Water Street Community Primary School	135	0		135	0	135	85	220	0	0	
2357	South Milford Community Primary School	424	0		424	0	424	267	691	0	0	
2358	Staveley Community Primary School	628	0		628	0	628	396	1,025	0	0	
2359	Sutton in Craven Community Primary School	0	0		0	0	0	0	0	0	0	
2360	Thornton in Craven Community Primary School	0	0		0	0	0	0	0	0	0	
2363	Whitley & Eggborough Community Primary School	0	0		0	0	0	0	0	0	0	
2364	Willow Tree CP	0	0		0	0	0	0	0	0	0	
2365	Skipton, Greatwood Community Primary School	410	0		410	0	410	259	669	0	0	
2366	Moorside Infant School	1,358	0		1,358	0	1,358	857	2,215	0	0	
2367	Moorside Junior School	900	0		900	0	900	568	1,468	0	0	
2368	Harrogate, Hookstone Chase Community Primary	1,571	0		1,571	0	1,571	595	2,166	0	0	
2372	Harrogate, Pannal Primary School	8,085	0		8,085	0	8,085	3,062	11,147	0	0	
2376	Harrogate, Oatlands Community Junior School	501	0		501	0	501	190	690	0	0	
2377	Aspin Park Community Primary School	1,433	0		1,433	0	1,433	543	1,976	0	0	
2380	Sherburn in Elmet, Hungate Community Primary S	0	0		0	0	0	0	0	0	0	
2381	Thorpe Willoughby Community Primary School	0	0		0	0	0	0	0	0	0	
2382	Rossett Acre Primary School	4,862	0		4,862	0	4,862	1,841	6,703	0	0	
2383	Coppice Valley Community Primary School	0	0		0	0	0	0	0	0	0	
2389	Knaresborough, Meadowside Community Primary	0	0		0	0	0	0	0	0	0	
2390	Selby, Barwic Parade Community Primary School	0	0		0	0	0	0	0	0	0	
2391	Ingleton Primary School	0	0		0	0	0	0	0	0	0	
2392	Tadcaster East Community Primary School	770	0		770	0	770	486	1,256	0	0	
2393	Glusburn Community Primary School	1,645	0		1,645	0	1,645	1,038	2,684	0	0	
2400	Barlby Bridge Community Primary School	691	0		691	0	691	436	1,127	0	0	
2401	Barlby Community Primary School	5,147	0		5,147	0	5,147	3,249	8,396	0	0	
2402	Hemingbrough Community Primary School	0	0		0	0	0	0	0	0	0	
2403	Hunmanby Primary School	1,111	0		1,111	0	1,111	701	1,812	0	0	
2404	Langton Primary School	329	0		329	0	329	207	536	0	0	
2405	Leavening Community Primary School	351	1,021		1,372	2,232	351	221	572	0	0	
2406	Luttons Community Primary School	0	0		0	0	0	0	0	0	0	
2407	North Duffield Community Primary School	2,537	0		2,537	0	2,537	1,602	4,139	0	0	
2408	Norton Community Primary School	0	0		0	0	0	0	0	0	0	
2410	Riccall Community Primary School	2,182	0		2,182	0	2,182	1,377	3,559	0	0	
2411	Rillington Community Primary School	0	0		0	0	0	0	0	0	0	
2413	Filey Junior School	0	0		0	0	0	0	0	0	0	
2418	Selby, Longman's Hill Community Primary School	0	0		0	0	0	0	0	0	0	
2421	Athelstan Community Primary School	0	0		0	0	0	0	0	0	0	
2422	Kellington Primary School	697	0		697	0	697	440	1,138	0	0	
2424	Harrogate, Saltergate Community Junior School	0	0		0	0	0	0	0	0	0	
2425	Saltergate Infant School	0	0		0	0	0	0	0	0	0	
2426	Roseberry Community Primary School	3,260	0		3,260	0	3,260	1,234	4,494	0	0	
2427	Riverside Community Primary School	0	0		0	0	0	0	0	0	0	
2430	Woodfield Community Primary School	0	0		0	0	0	0	0	0	0	
3000	Ainderby Steeple Church of England Primary Scho	2,125	0		2,125	0	2,125	1,341	3,466	0	0	
3001	Aiskew, Leeming Bar Church of England Primary S	298	0		298	0	298	188	486	0	0	
3005	St Hilda's Ampleforth Church of England Voluntary	0	0		0	0	0	0	0	0	0	
3006	Arkengarthdale Church of England Primary Schoo	0	559		559	1,072	0	0	0	0	0	
3008	Bainbridge Church of England Primary and Nurser	657	0		657	0	657	414	1,071	0	0	
3009	Baldersby St James Church of England Voluntary	1,776	482		2,258	1,223	1,776	1,121	2,896	0	0	
3010	Bedale Church of England Primary School	0	0		0	0	0	0	0	0	0	
3012	Bilsdale Midcable Chop Gate Church of England V	243	0		243	0	243	153	396	0	0	
3015	Brompton-on-Swale Church of England Primary S	0	0		0	0	0	0	0	0	0	
3016	West Burton Church of England Primary School	0	0		0	0	0	0	0	0	0	
3020	Crakehall Church of England Primary School	0	0		0	0	0	0	0	0	0	
3021	Crayke Church of England Voluntary Controlled Pr	436	0		436	0	436	275	711	0	0	
3022	Croft Church of England Primary School	4,117	0		4,117	0	4,117	1,559	5,677	0	0	
3025	Danby Church of England Voluntary Controlled Sc	734	0		734	0	734	463	1,197	0	0	
3027	Dishforth Church of England Voluntary Controlled	2,481	11,375		13,857	16,613	2,481	1,566	4,048	0	0	
3030	East Cowton Church of England Primary School	0	0		0	0	0	0	0	0	0	
3034	Eppleby, Forcett Church of England Primary Scho	0	0		0	0	0	0	0	0	0	
3035	Sleights Church of England Voluntary Controlled F	182	0		182	0	182	115	298	0	0	
3039	Foston Church of England Voluntary Controlled Pr	735	7,251		7,986	11,477	735	464	1,198	0	0	
3040	Gillamoor Church of England Voluntary Controlled	0	752		752	1,978	0	0	0	0	0	
3042	Marwood Church of England Voluntary Controlled	0	0		0	0	0	0	0	0	0	
3045	Hackforth and Homby Church of England Primary	0	3,327		3,327	5,691	0	0	0	0	0	
3046	Hackness Church of England Voluntary Controlled	227	0		227	0	227	144	371	0	0	
3050	Hawsker Cum Stainsacre Church of England Volu	737	0		737	0	737	465	1,203	0	0	
3053	Hipswell Church of England Primary School	776	0		776	0	776	490	1,267	0	0	
3054	Hovingham Church of England Voluntary Controlle	0	0		0	0	0	0	0	0	0	
3055	Huby Church of England Voluntary Controlled Prim	1,371	0		1,371	0	1,371	865	2,236	0	0	
3057	Husthwaite Church of England Voluntary Controlle	425	490		915	1,968	425	268	693	0	0	
3060	Ingleby Greenhow Church of England Voluntary C	2,550	5,573		8,123	9,710	2,550	1,610	4,160	0	0	
3062	Kirby Hill Church of England Primary School	1,983	8,018		10,001	13,511	1,983	1,251	3,234	0	0	
3065	Kirkby Fleetham Church of England Primary Scho	0	0		0	0	0	0	0	0	0	
3068	Knayton Church of England Voluntary Controlled F	471	0		471	0	471	178	650	0	0	
3069	Lythe Church of England Voluntary Controlled Prir	868	0		868	0	868	548	1,416	0	0	
3076	Kell Bank Church of England Primary School	0	0		0	0	0	0	0	0	0	
3079	Middleton Tyas Church of England Primary School	0	0		0	0	0	0	0	0	0	
3088	Pickhill Church of England Primary School	0	0		0	0	0	0	0	0	0	
3090	Ravensworth Church of England Primary School	441	7,100		7,542	11,984	441	167	608	0	0	
3099	Sand Hutton Church of England Voluntary Control	195	0		195	0	195	123	318	0	0	

		OPTION 1			OPTION 2			
		2018/19			2018/19			2019/20
DfE	SCHOOL	Transitional Funding (April to July)	New Methodology - Exceptional E2 (Aug to Mar)	TOTAL 2018/19	Transitional Funding (April to July)	Transitional Funding (Aug to March)	TOTAL 2018/19	Funding Ceases
3355	Cawood Church of England Voluntary Aided Primary School	1,750	0	1,750	0	1,104	2,854	0
3356	Burnt Yates Church of England Primary School	0	427	427	1,440	0	0	0
3357	Dacre Braithwaite Church of England Primary School	0	0	0	0	0	0	0
3360	Kirkby in Malhamdale United Voluntary Aided Primary School	604	0	604	0	381	985	0
3361	All Saints Church of England Primary School, Kirkstall	0	0	0	0	0	0	0
3362	Long Preston Endowed Voluntary Aided Primary School	11	0	11	0	7	18	0
3363	Marton cum Grafton Church of England Voluntary Aided Primary School	0	0	0	0	0	0	0
3368	Richard Taylor Church of England Primary School	8,651	0	8,651	0	3,276	11,928	0
3369	Barkston Ash Catholic Primary School	0	0	0	0	0	0	0
3371	St Mary's Catholic Primary School, Knaresborough	4,835	0	4,835	0	1,831	6,665	0
3372	St Wilfrid's Catholic Primary School, Ripon	0	0	0	0	0	0	0
3373	St Mary's Catholic Primary School, Selby	0	0	0	0	0	0	0
3376	St Joseph's Catholic Primary School, Tadcaster	2,177	1,323	3,500	2,452	1,374	3,551	0
3377	St Robert's Catholic Primary School, Harrogate	0	0	0	0	0	0	0
3378	St Joseph's Catholic Primary School, Harrogate	1,283	0	1,283	0	486	1,769	0
3600	St Benedict's Roman Catholic Primary School, Ambsay	0	0	0	0	0	0	0
3602	St Hedda's Roman Catholic Primary School	0	0	0	0	0	0	0
3609	St Mary's Roman Catholic Primary School, Malton	1,972	0	1,972	0	1,245	3,217	0
3610	St Joseph's Roman Catholic Primary School, Pickering	0	0	0	0	0	0	0
3614	St Mary's Roman Catholic Primary School, Richmond	458	0	458	0	289	748	0
3615	St Peter's Roman Catholic Primary School	0	0	0	0	0	0	0
3616	All Saints Roman Catholic Primary School	0	0	0	0	0	0	0
3620	St Hilda's Roman Catholic Primary School	0	0	0	0	0	0	0
3631	St George's Roman Catholic Primary School, Scarborough	0	0	0	0	0	0	0
3902	Sacred Heart Roman Catholic Primary School	101	0	101	0	63	164	0
3903	St John's CE Primary School, Knaresborough	310	0	310	0	195	505	0
5200	Nun Monkton Foundation Primary School	0	3,380	3,380	0	0	0	0
4000	Skipton Academy	0	0	0	0	0	0	0
4001	Ebor Academy - Filey School, a Technology College	0	0	0	0	0	0	0
4002	Scarborough University Technical College	0	0	0	0	0	0	0
4003	Brayton Academy	0	0	0	0	0	0	0
4004	Risedale Sports and Community College	0	0	0	0	0	0	0
4005	Easingwold School	0	0	0	0	0	0	0
4022	Ryedale School	0	0	0	0	0	0	0
4035	Thirsk School & Sixth Form College	0	0	0	0	0	0	0
4039	Caedmon College Whitby	0	0	0	0	0	0	0
4041	Eskdale School	2,817	0	2,817	0	1,778	4,596	0
4047	Stokesley School	0	0	0	0	0	0	0
4052	Bedale High School	142	0	142	0	89	231	0
4054	Lady Lumley's School	0	0	0	0	0	0	0
4069	George Pindar Community Sports College	0	0	0	0	0	0	0
4070	Graham School Science College	0	0	0	0	0	0	0
4073	Scalby School	0	0	0	0	0	0	0
4074	Northallerton School & 6th Form College	0	0	0	0	0	0	0
4075	The Wensleydale School	0	0	0	0	0	0	0
4076	Richmond School	0	0	0	0	0	0	0
4077	Malton School	0	0	0	0	0	0	0
4152	Norton College	0	0	0	0	0	0	0
4200	Harrogate Grammar School	0	0	0	0	0	0	0
4202	King James's School	1,778	0	1,778	0	1,122	2,901	0
4203	Outward Academy - Ripon	0	0	0	0	0	0	0
4205	Settle College	0	0	0	0	0	0	0
4206	Upper Wharfedale School - A Specialist Sports College	9,657	0	9,657	0	6,095	15,753	0
4210	South Craven School, The Technology & Engineering College	0	0	0	0	0	0	0
4211	Tadcaster Grammar School Business and Enterprise College	0	0	0	0	0	0	0
4215	Ripon Grammar School	0	0	0	0	0	0	0
4216	Sherburn High School Specialist Science College	0	0	0	0	0	0	0
4217	Rossett School	0	0	0	0	0	0	0
4219	Harrogate High School	0	0	0	0	0	0	0
4221	Boroughbridge High School	0	0	0	0	0	0	0
4223	Nidderdale High School & Community College	4,353	0	4,353	0	2,748	7,101	0
4225	Selby High School	0	0	0	0	0	0	0
4232	Barby High School	5,185	0	5,185	0	1,964	7,149	0
4518	Skipton Girls' High School	0	0	0	0	0	0	0
4604	St Augustine's Catholic School, Scarborough	0	0	0	0	0	0	0
4605	St Francis Xavier School	0	0	0	0	0	0	0
4608	Ermysted's Grammar School	0	0	0	0	0	0	0
4609	St John Fisher Catholic High School, Harrogate	0	0	0	0	0	0	0
4610	Holy Family Catholic High School, Carlton	3,826	0	3,826	0	2,415	6,242	0
4611	St Aidan's Church of England High School	35,677	0	35,677	0	13,511	49,188	0
		257,078	133,370	390,448	200,464	133,333	390,411	0

Appendix 2 – Proposed Criteria For Allocating E2 Funding

Factors proposed within exceptional E2 criteria related to size of school

- The size of the school
- The number of children and young people with EHCPs and the number identified at SEN support
- The school's notional SEN budget

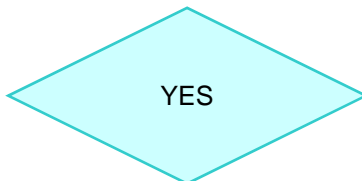
Factors proposed within exceptional E2 criteria related to higher proportions of SEN pupils

- % of children and young people with identified SEN in comparison to LA cohort averages. (proportion of cohort with EHCP plus the average number at SEN support over the past 3 years)
- The school's notional SEN budget

Decision Chart

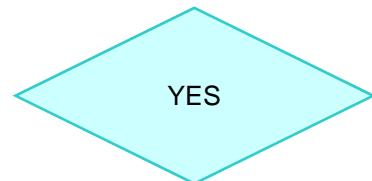
Criteria 1a **Size**

'Is this a small school or academy?'
(100 pupils or less?)

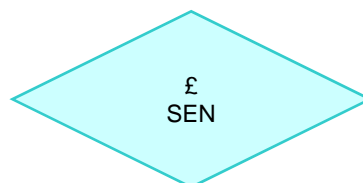


Criteria 1b **Inclusive**

'Does the school or academy have a higher %
of pupils with identified SEN than LA
average?'



Criteria 2 'What are the numbers of pupils with EHCPs? X £6,000 plus What are the number of pupils at SEN support? X £reduced rates'



Criteria 3 'What is the gap between £ SEN and the school or academy's notional E2 SEN budget?'

